

# B&C ID.501 - FU 150



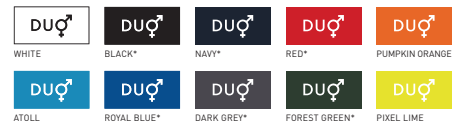
**OUTER  
WEAR  
/UNIT**



**MEDIUM FIT**

## The micro-fleece Basic by B&C

- Tone-on-tone full zip opening with zip pull
- Necktape
- 2 front pockets with zips and zip pulls
- Essential contemporary look
- Open hem



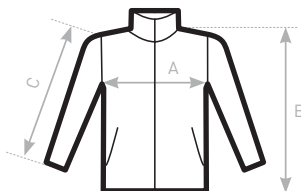
\* COLOURS AVAILABLE IN 4XL

- 100% polyester anti-pilling micro-fleece
- 280 g/m<sup>2</sup>
- XS - S - M - L - XL - 2XL - 3XL - 4XL \*
- 5 pcs/pack & 15 pcs/carton

\* ONLY AVAILABLE IN BLACK, NAVY, RED, ROYAL BLUE, DARK GREY AND FOREST GREEN



**DUO  
CONCEPT**  
with B&C ID.501 /w.



### SIZES [CM]

B&C ID.501 FU 150	XS	S	M	L	XL	2XL	3XL	4XL
A HALF CHEST	50	53	56	59	62	65	68	71
B BODY LENGTH	66	67,5	69	70,5	72	73,5	75	76,5
C SLEEVE LENGTH	61	62,5	64	65,5	67	68,5	70	71,5



OEKO-TEX®  
CONFIDENCE IN TEXTILES  
STANDARD 100  
1501003 Centexbel  
Tested for harmful substances.  
www.oeko-tex.com/standard100