

B&C MULTI-ACTIVE /MEN - JM 825

MIDDLE WEIGHT JACKET



Middle weight multi-use jacket with comfortable fleece lining


POLYESTER 210T TAFFETA

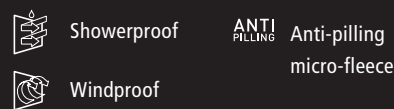
Outer layer: 100% polyester 210T taffeta

Body lining: 100% polyester anti-pilling micro-fleece

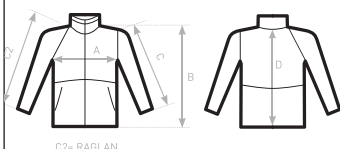
Sleeve lining: 100% polyester quilted taffeta

 S - M - L - XL - 2XL - 3XL

 5 pcs/pack & 30 pcs/carton



- 1- Concealed hood
 - 2- Contrasted micro-fleece lining for extra warmth
 - 3- Standing collar, adjustable hem and cuffs for great protection
 - 4- PU Coating for better water protection and breathability
 - 5- Forward seam on shoulder for better comfort and waterproofness
 - 6- 2 zippered hand pockets with overlap
 - 7- 1 inner wallet pocket with closing tab
- Zip at lower back gives easy full decoration access (front - back - sleeves)
Maximised decoration areas
- Fabric tested for the following decoration techniques: screen printing, heat transfer, sublimation (for white only) and embroidery



SIZES [CM]

B&C MULTI-ACTIVE /MEN JM 825	XS	S	M	L	XL	2XL	3XL
A HALF CHEST	-	55	58	61	64	67	70
B BODY LENGTH FROM NECK POINT	-	72,5	74,5	76,5	78,5	80,5	82,5
C SLEEVE LENGTH	-	62,5	64	65,5	67	68,5	70
D CENTER BACK LENGTH	-	71	73	75	77	79	81

B&C
COLLECTION
OUTER WEAR /UNIT