

# B&C CREW BOMBER /MEN - JM 961

## MIDDLE WEIGHT JACKET



**Middle weight bomber jacket with comfortable padding and concealed hood**

**POLYESTER PONGEE**

Outer layer: 100% polyester pongee

Inner layer: 100% polyester quilted taffeta

S - M - L - XL - 2XL - 3XL

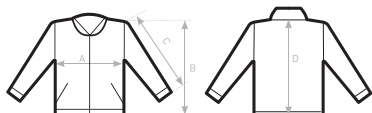
1 pc/pack & 15 pcs/carton



- 1- Contemporary cotton feel heavy rib on cuffs and bottom hem
  - 2- Standing collar and full length internal stormflap ensure wind protection
  - 3- Forward shoulder seams for better comfort and water protection
  - 4- Tone-on-tone, high quality SBS zippers
  - 5- 2 zipped hand pockets with overlap
  - 6- 1 inner wallet pocket with closing tabs
- Easy access for decoration thanks to the zip opening at the bottom of the lining
- Fabric tested for the following decoration techniques - screen printing, heat transfer, and embroidery.



**DUO**  
**CONCEPT**  
with B&C Crew Bomber /women



**SIZES [CM]**

B&C CREW BOMBER /MEN JM 961	XS	S	M	L	XL	2XL	3XL
A HALF CHEST	-	56	59	62	65	68	71
B BODY LENGTH FROM NECK POINT	-	68	70	72	74	76	78
C SLEEVE LENGTH	-	66	67,5	69	70,5	72	73,5
D CENTER BACK LENGTH	-	66,5	68,5	70,5	72,5	74,5	76,5

B&C  
COLLECTION  
**OUTER WEAR /UNIT**