

# B&C SIROCCO /WOMEN - JW 902

## LIGHT WEIGHT JACKET / WITHOUT LINING



### The Market Reference Windbreaker

- 100% nylon taffeta
- XS - S - M - L - XL - 2XL
- 10 pcs/pack & 30 pcs/carton



- Windproof
- Water-repellent
- Showerproof
- Feminine cut

- 1- Full zip opening with zip pull
- 2- Adjustable storm hood concealed inside the collar
- 3- 2 front pockets
- 4- Fold-away jacket (K-way® system) in pocket with double slider zip
- 5- Adjustable bottom hem with drawcord

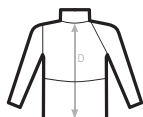


**DUO**  
**CONCEPT**

with B&C Sirocco  
EXISTS IN B&C SIROCCO /KIDS



C2= RAGLAN



### SIZES [CM]

B&C SIROCCO /WOMEN JW 902	XS	S	M	L	XL	2XL	3XL
A HALF CHEST	50	52	54	56	58	60	-
B BODY LENGTH FROM NECK POINT	70	72	74	76	78	80	-
C SLEEVE LENGTH	61	63	65	67	69	71	-
D CENTER BACK LENGTH	69	71	73	75	77	79	-

B&C  
COLLECTION  
**OUTER  
WEAR  
/UNIT**