

B&C HOODED SOFTSHELL /W. - JW 937

SOFTSHELL JACKET



Detachable balaclava hood with adjustable drawstring and trendy stoppers



Full zip opening with chin protector



Full inner placket in shell fabric

Raglan Sleeves

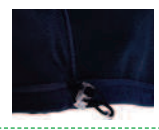
Easy access for decoration via inner left breast zip

Flat stitching for greater comfort

Perfect arm & elbow sleeve shape

Feminine cut

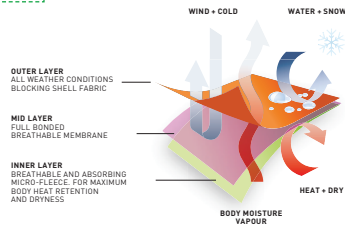
Adjustable bottom hem (with drawcord) Longer back



2 front side pockets with zips



Cuffs with closing tabs & embossed plastic pull



High performance Softshell jacket

3-LAYER SOFTSHELL JACKET 340G/M²

Outer layer: 94% polyester - 6% elastane
Woven Softshell

Mid layer: bonded breathable membrane, windproof, waterproof

Inner layer: 100% polyester anti-pilling micro-fleece and 100% polyester mesh lining on front panels

Waterproof: 5000 mm

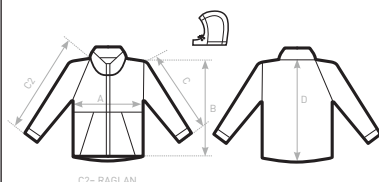
Breathable: 1000 MVP

XS - S - M - L - XL - 2XL

1 pc/pack & 10 pcs/carton



- Windproof
- Waterproof
- Thermo-insulated
- Breathable
- Water-repellent
- Real micro-fleece
- ANTI-FILLING Anti-pilling
- 4-way stretch
- Feminine cut



SIZES [CM]

B&C HOODED SOFTSHELL /W. JW 937

	XS	S	M	L	XL	2XL	3XL
A HALF CHEST	44	46	48	50	52	54	-
B BODY LENGTH FROM NECK POINT	59	61	63	65	67	69	-
C2 SLEEVE LENGTH FROM NECK POINT FOLLOWING THE CURVE	67,5	69,5	71,5	73,5	75,5	77,5	-
D CENTER BACK LENGTH	62	64	66	68	70	72	-

B&C
COLLECTION
OUTER WEAR /UNIT