

KARIBAN

REFERENCE : K115

SIZES : L_XL

COMPOSITION :

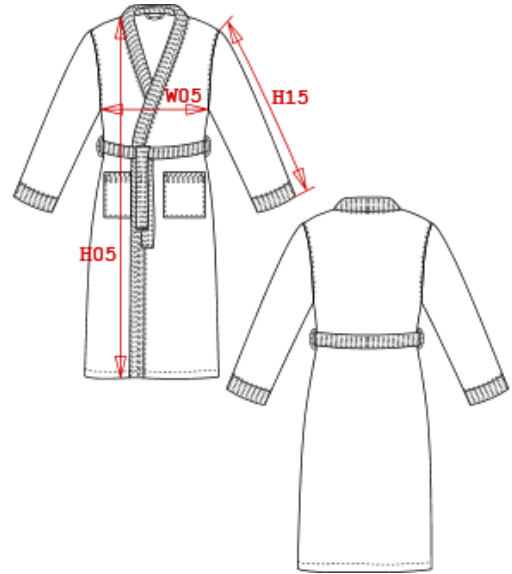
Main fabric : Terry 400 100%cotton

WEIGHT :

Main fabric : 400 gsm

ARTICLE WEIGHT :

1302 gr/pc



DESCRIPTION	
Français :	Peignoir col kimono
English :	Kimono towel robe
Nederlands :	Badjas met kimonohals
Deutsch :	Kimonobademantel
Español :	Albornoz col kimono
Italiano :	Accappatoio a kimono
Português :	Robe kimono

COLORS	PANTONE SERIGRAPHIE
Navy	534C
White	White

MEASUREMENT						
Description	L	XL				
W05 1/2 largeur poitrine / 1/2 chest width	55	57				
H05 Hauteur totale / Total height	122	127				
H15 Longueur manche / Sleeve length	55	55				

CARE LABEL				

PACKING	
Box	10 pcs / box L => L:40cm W:60cm H:40cm GW:13.50kg NW:12.50kg XL => L:40cm W:60cm H:40cm GW:13.80kg NW:12.80kg