

# KARIBAN

**REFERENCE :** K232

**SIZES :** S\_M\_L\_XL\_XXL\_3XL

**COMPOSITION :**

Main fabric : Polyester / Cotton pique 65/35 - 220 65% polyester / 35%cotton

Main fabric : Polyester / Cotton pique 65/35 - 220 For contrasted yokes 65%polyester / 35%cotton

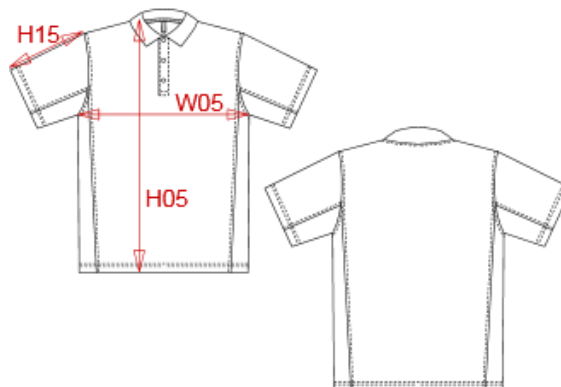
**WEIGHT :**

Main fabric : 220 gsm

Main fabric : 220 gsm

**ARTICLE WEIGHT :**

300 gr/pc



DESCRIPTION	
<b>Français :</b>	Polo bicolore
<b>English :</b>	Bi-colour short sleeve polo shirt
<b>Nederlands :</b>	Tweekleurige polo
<b>Deutsch :</b>	Zweifarbiges polohemd
<b>Español :</b>	Polo piqué bicolor
<b>Italiano :</b>	Polo bicolore
<b>Português :</b>	Polo pique bicolor

COLORS	PANTONE SERIGRAPHIE
White / Red	White / 200C
Navy / White	296C / White
White / Royal blue	White / 287C
Red / Black	200C / Black
Black / Lime	Black / 367C
Navy / Sky blue	296C / 645C
Black / Slate grey	Black / 424C
Black / Orange	Black / 1585C
Navy / Deep pink	296C / 1905C
Navy / Pink	296C / 1905C
Light grey / Red	416C / 200C
Dark grey / Orange	432C / 1585C

MEASUREMENT						
Description	S	M	L	XL	XXL	3XL
<b>H05 (M)</b> Hauteur totale / Total height	68,50	70,50	72,50	74,50	76,50	79,25
<b>W05 (M)</b> 1/2 largeur poitrine / 1/2 chest width	49	52	55	58	61	65
<b>H15C (M)</b> Longueur manche courte / Short sleeve length	21	22	23	24	25	26,25

CARE LABEL				

PACKING	
Box	25 pcs / box S-M => L:54cm W:37cm H:17cm GW:9.40kg NW:7.60kg L-XL => L:58cm W:38cm H:17cm GW:10.40kg NW:8.60kg XXL-3XL => L:60cm W:40cm H:18cm GW:11.20kg NW:9.40kg