

KARIBAN

REFERENCE : K241

SIZES : S_M_L_XL_XXL_3XL_4XL

COMPOSITION :

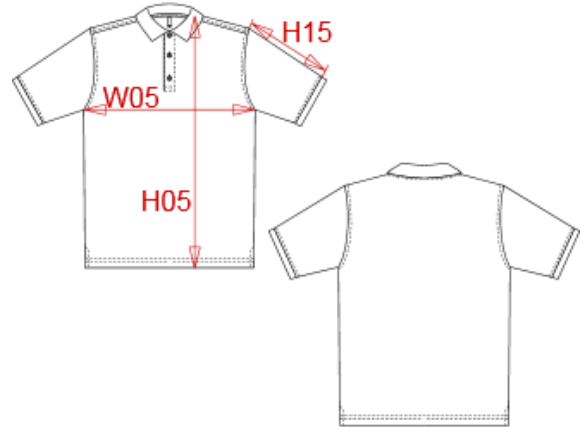
Main fabric : Combed cotton single pique - 220 100%cotton
 Main fabric : Combed Cotton/Viscose single pique 90/10 - 220
 90%cotton/10%viscose

WEIGHT :

Main fabric : 220 gsm
 Main fabric : 220 gsm

ARTICLE WEIGHT :

240 gr/pc



DESCRIPTION	
Français : Polo homme manches courtes	
English : Men's short sleeve pique polo shirt	
Nederlands : Heren polo met korte mouwen	
Deutsch : Herren kurzarm polo hemd pique	
Español : Polo de manga corta	
Italiano : Polo pique' uomo maniche corte	
Português : Polo pique manga curta	

MEASUREMENT							
Description	S	M	L	XL	XXL	3XL	4XL
H05 Hauteur totale / Total height	72,50	74,50	76,50	78,50	80,50	83,25	86
W05 1/2 largeur poitrine / 1/2 chest width	50	53	56	59	62	66	70
H15 Longueur manche / Sleeve length	18	19	20	21	22	23,20	24,40

CARE LABEL						
For Cotton	For Cotton/Viscose		For Cotton	For Cotton/Viscose		

PACKING	
Box	25 pcs / box S => L:54cm W:38cm H:16cm GW:6.90kg NW:5.50kg M => L:54cm W:38cm H:16cm GW:7.30kg NW:5.90kg L => L:56cm W:40cm H:16cm GW:7.80kg NW:6.30kg XL => L:56cm W:40cm H:16cm GW:8.20kg NW:6.70kg XXL => L:58cm W:42cm H:16cm GW:8.70kg NW:7.10kg 3XL => L:62cm W:44cm H:16cm GW:9.20kg NW:7.50kg 4XL => L:62cm W:44cm H:16cm GW:9.60kg NW:7.90kg

COLORS	PANTONE SERIGRAPHIE
White	White
Black	Black
Navy	296C
Red	200C
Dark grey	432C
Dark khaki	418C
Sky blue	278C
Orange	1585C
Yellow	1225C
Light royal blue	7685C
Chocolate	439C
Tropical blue	2185C
Oxford grey	-
Kelly green	7727C
Fuchsia	219C
Purple	7447C
Wine	7645C
Lime	367C
Forest green	5605C
Light sand	482C