

KARIBAN

REFERENCE : K250

SIZES : S_M_L_XL_XXL_3XL

COMPOSITION :

Main fabric : Combed cotton single pique - 220 For solid colors
100%cotton

Main fabric : Combed Cotton / Viscose single pique 90/10 - 220
For heather colors 90%cotton / 10%viscose

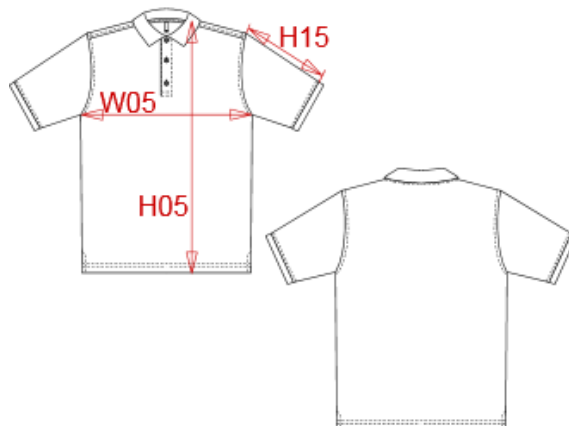
WEIGHT :

Main fabric : 220 gsm

Main fabric : 220 gsm

ARTICLE WEIGHT :

240 gr/pc



DESCRIPTION								COLORS		PANTONE SERIGRAPHIE	
Français : Polo manches courtes homme								White / Navy / Red	White / 296C / 200C		
English : Men's short sleeve polo shirt								Navy / Red / White	296C / 200C / White		
Nederlands : Heren piqué polo korte mouwen								Black / Light grey / White	Black / 422C / White		
Deutsch : HERREN KURZARM PIQUE POLO								Red / Navy / White	200C / 296C / White		
Español : Polo piqué de manga corta para hombre								Light royal blue / Red / White	7685C / 200C / White		
Italiano : POLO UOMO MANICHE CORTE								Navy / Light grey / White	296C / 422C / White		
Português : Polo manga curta								Sky blue / Navy / White	278C / 296C / White		
MEASUREMENT								Oxford grey / Navy / White	- / 296C / White		
Description	S	M	L	XL	XXL	3XL		Black / Red / White	Black / 200C / White		
H05 Hauteur totale / Total height	70,50	72,50	74,50	76,50	78,50	81,25		Light royal blue / Yellow / White	7685C / 1225C / White		
W05 1/2 largeur poitrine / 1/2 chest width	49	52	55	58	61	65		Kelly green / Light grey / White	7727C / 422C / White		
H15 Longueur manche / Sleeve length	18	19	20	21	22	23,25		Red / Yellow / White	200C / 1225C / White		
CARE LABEL								Navy / Wine / White	296C / 7645C / White		
								Black / Red / Yellow	Black / 200C / 1225C		
PACKING								White / Sky blue / Light grey	White / 278C / 422C		
Box	25 pcs / box S-M => L:55cm W:36cm H:16cm GW:7.30kg NW:6.00kg L-XL => L:60cm W:38cm H:16cm GW:7.80kg NW:6.80kg XXL-3XL => L:64cm W:40cm H:16cm GW:9.00kg NW:7.50kg										