

KARIBAN

REFERENCE : K255

SIZES : XS_S_M_L_XL_XXL_3XL

COMPOSITION :

Main fabric : Ring spun Combed Cotton pique preshrunk - 180 100%cotton

Main fabric : Ring spun Combed Cotton/Viscose pique preshrunk 90/10 - 180 For heather colors 90%cotton / 10% viscose

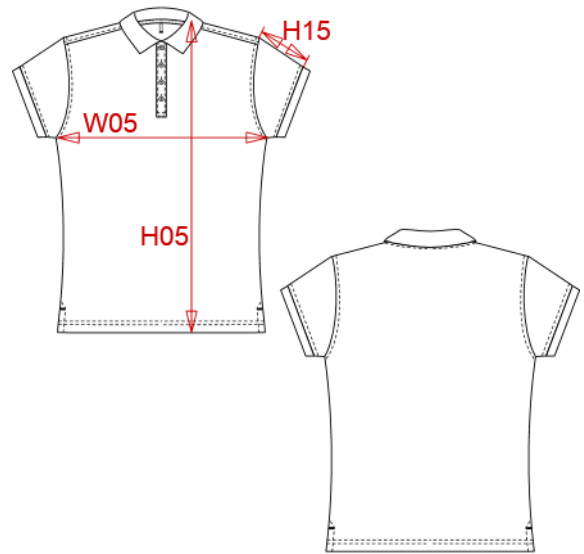
WEIGHT :

Main fabric : 180 gsm

Main fabric : 180 gsm

ARTICLE WEIGHT :

168 gr/pc



DESCRIPTION	
Français : Polo piqué manches courtes femme	
English : Ladies' piqué short sleeve polo shirt	
Nederlands : Piqué-damespolo korte mouwen	
Deutsch : Damen Kurzarm-Poloshirt. Baumwollpiqué	
Español : Polo piqué de manga corta para mujer	
Italiano : Polo piqué donna maniche corte	
Português : Polo piqué de senhora de manga curta	

COLORS	PANTONE SERIGRAPHIE
White	White
Black	Black
Navy	296C
Red	200C
Dark grey	447C
Oxford grey	-
Light royal blue	653C
Orange	1585C
Yellow	1235C
Forest green	5605C
Tropical blue	7468C
Wine	504C
Sky blue	278C
Fuchsia	7425C
Kelly green	7727C

MEASUREMENT							
Description	XS	S	M	L	XL	XXL	3XL
H05 Hauteur totale / Total height	60,50	62	63,50	65	66,50	68,75	70,25
W05 1/2 largeur poitrine / 1/2 chest width	44	46	48	50	52	55	57
H15 Longueur manche / Sleeve length	9,50	10,25	11	11,75	12,50	13,50	14,25

CARE LABEL					
		For solid colors	For heather colors		

PACKING	
Box	50 pcs / box XS-S => L:47cm W:34cm H:28cm GW:8.63kg NW:7.60kg M-L => L:50cm W:34cm H:28cm GW:9.57kg NW:8.50kg XL-XXL => L:54cm W:36cm H:28cm GW:10.67kg NW:9.50kg 3XL => L:56cm W:38cm H:28cm GW:11.50kg NW:10kg