

# KARIBAN

**REFERENCE :** K256

**SIZES :** S\_M\_L\_XL\_XXL\_3XL\_4XL

**COMPOSITION :**

Main fabric : Ring spun Combed Cotton pique preshrunk - 180 100%cotton

Main fabric : Ring spun Combed Cotton/Viscose pique preshrunk 90/10 - 180 For heather colors 90%cotton / 10% viscose

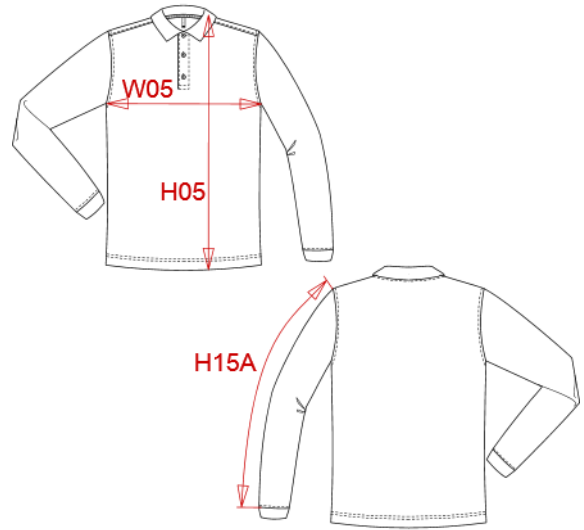
**WEIGHT :**

Main fabric : 180 gsm

Main fabric : 180 gsm

**ARTICLE WEIGHT :**

280 gr/pc



DESCRIPTION	
<b>Français :</b>	Polo piqué manches longues homme
<b>English :</b>	Men's piqué long sleeve polo shirt
<b>Nederlands :</b>	Piqué-herenpolo lange mouwen
<b>Deutsch :</b>	Herren Langarm-Polohemd. Baumwollpiqué
<b>Español :</b>	Polo piqué de manga larga para hombre
<b>Italiano :</b>	Polo piqué uomo maniche lunghe
<b>Português :</b>	Polo piqué de homem de manga comprida

COLORS	PANTONE SERIGRAPHIE
White	White
Black	Black
Navy	296C
Red	200C
Dark grey	447C
Oxford grey	-
Light royal blue	653C
Orange	1585C
Yellow	1235C
Forest green	5605C
Wine	504C
Sky blue	278C
Tropical blue	7468C
Fuchsia	7425C
Kelly green	7727C

MEASUREMENT							
Description	S	M	L	XL	XXL	3XL	4XL
<b>H05</b> Hauteur totale / Total height	72,50	74,50	76,50	78,50	80,50	83,25	85,25
<b>W05</b> 1/2 largeur poitrine / 1/2 chest width	50	53	56	59	62	66	69
<b>H15A</b> Longueur manche sans poignet / Sleeve length without cuff	61	62	63	64	65	66,25	67,25

CARE LABEL					
		For solid colors	For heather colors		

PACKING	
Box	40 pcs / box S-M => L:53cm W:36cm H:28cm GW:14.06kg NW:12.90kg L-XL => L:55cm W:38cm H:28cm GW:15.74kg NW:14.50kg XXL-3XL => L:59cm W:40cm H:28cm GW:17.15kg NW:15.80kg 4XL => L:60cm W:40cm H:28cm GW:17.94kg NW:16.57kg