

KARIBAN

REFERENCE : K257

SIZES : XS_S_M_L_XL_XXL_3XL

COMPOSITION :

Main fabric : Ring spun Combed Cotton pique preshrunk - 180

Yarn count: 30/S

Gauge: 24

Main fabric : Ring spun Combed Cotton/Viscose pique preshrunk 90/10 - 180 For heather colors 90%cotton / 10% viscose

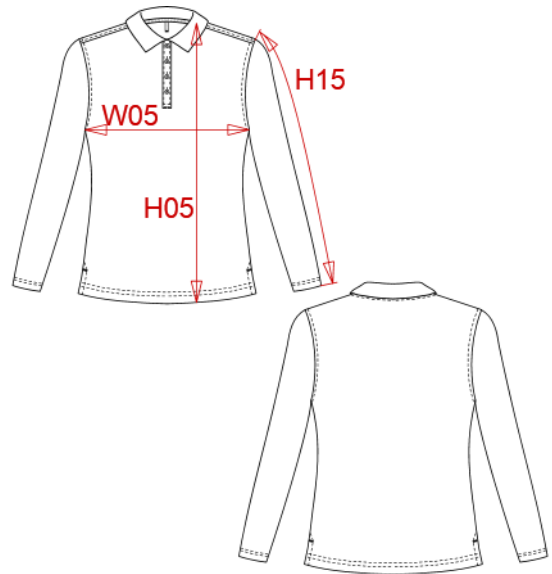
WEIGHT :

Main fabric : 180 gsm

Main fabric : 180 gsm

ARTICLE WEIGHT :

195 gr/pc



| DESCRIPTION | |
|---------------------|---|
| Français : | Polo piqué manches longues femme |
| English : | Ladies' piqué long sleeve polo shirt |
| Nederlands : | Piqué-damespolo lange mouwen |
| Deutsch : | Damen Langarm-Polohemd. Baumwollpiqué |
| Español : | Polo piqué de manga larga para mujer |
| Italiano : | Polo piqué donna maniche lunghe |
| Português : | Polo piqué de senhora de manga comprida |

| COLORS | PANTONE SERIGRAPHIE |
|------------------|---------------------|
| White | White |
| Black | Black |
| Navy | 296C |
| Red | 200C |
| Dark grey | 447C |
| Oxford grey | - |
| Light royal blue | 653C |
| Orange | 1585C |
| Yellow | 1235C |
| Forest green | 5605C |
| Wine | 504C |
| Sky blue | 278C |
| Tropical blue | 7468C |
| Fuchsia | 7425C |
| Kelly green | 7727C |

| MEASUREMENT | | | | | | | |
|---|-------|----|-------|----|-------|-------|-------|
| Description | XS | S | M | L | XL | XXL | 3XL |
| H05 Hauteur totale / Total height | 60,50 | 62 | 63,50 | 65 | 66,50 | 68,75 | 70,25 |
| W05 1/2 largeur poitrine / 1/2 chest width | 44 | 46 | 48 | 50 | 52 | 55 | 57 |
| H15 Longueur manche / Sleeve length | 59 | 60 | 61 | 62 | 63 | 64,50 | 65,50 |

| CARE LABEL | | | | | |
|------------|--|------------------|--------------------|--|--|
| | | | | | |
| | | For solid colors | For heather colors | | |

| PACKING | |
|---------|---|
| Box | 40 pcs / box XS-S => L:47cm W:34cm H:28cm GW:10.63kg NW:9.60kg M-L => L:50cm W:34cm H:28cm GW:11.77kg NW:10.70kg XL-XXL => L:54cm W:36cm H:28cm GW:12.77kg NW:11.88kg 3XL => L:56cm W:38cm H:28cm GW:13.06kg NW:12.35kg |