

# KARIBAN

**REFERENCE :** K357

**SIZES :** S\_M\_L\_XL\_XXL\_3XL\_4XL

**COMPOSITION :**

Main fabric : Combed Cotton single jersey - 180 100%cotton

Main fabric : Combed Cotton / Viscose single jersey 90/10 - 180 90%cotton / 10%viscose

**WEIGHT :**

Main fabric : 180 gsm

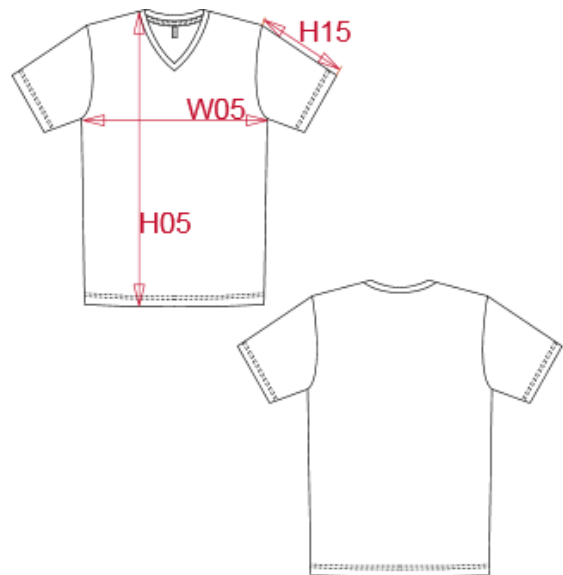
Main fabric : 180 gsm

**FABRIC CONSTRUCTION AND FINISHING :**

Enzyme fabric wash

**ARTICLE WEIGHT :**

160 gr/pc



DESCRIPTION	
<b>Français :</b>	T-shirt homme manches courtes encolure V
<b>English :</b>	Men's short sleeve V-neck T-shirt
<b>Nederlands :</b>	Heren T-shirt met V-hals en korte mouwen
<b>Deutsch :</b>	Herren kurzarm T-shirt mit V-ausschnitt
<b>Español :</b>	Camiseta de manga corta y cuello de pico
<b>Italiano :</b>	T-shirt uomo maniche corte scollo a V
<b>Português :</b>	T-shirt de homem manga curta decote V

MEASUREMENT							
Description	S	M	L	XL	2XL	3XL	4XL
<b>H05</b> Hauteur totale / Total height	69,50	71,50	73,50	75,50	78,25	81	83
<b>W05</b> 1/2 largeur poitrine/1/2 chest width	48	51	54	57	61	65	68
<b>H15</b> Longueur manche / Sleeve length	20,50	21,50	22,50	23,50	25	26,50	27,50

CARE LABEL	

PACKING	
Box	50 pcs / box S => L:56cm W:39cm H:22cm GW:9.00kg NW:7.50kg M => L:56cm W:39cm H:22cm GW:10.00kg NW:8.50kg L => L:56cm W:39cm H:22cm GW:10.50kg NW:9.00kg XL => L:62cm W:40cm H:22cm GW:11.20kg NW:9.70kg XXL => L:62cm W:40cm H:22cm GW:12.00kg NW:10.50kg 3XL => L:68cm W:42cm H:22cm GW:12.70kg NW:11.00kg 4XL => L:68cm W:42cm H:22cm GW:13.40kg NW:11.70kg

COLORS	PANTONE SERIGRAPHIE
White	White
Black	Black
Navy	296C
Dark grey	432C
Red	200C
Orange	1585C
Sky blue	278C
Dark khaki	418C
Yellow	1225C
Light royal blue	7685C
Chocolate	439C
Tropical blue	2185C
Oxford grey	-
Kelly green	7727C
Fuchsia	219C
Purple	7447C
Wine	7645C
Lime	367C
Forest green	5605C
Light sand	482C