

KARIBAN

REFERENCE : K383

SIZES : S_M_L_XL_XXL_3XL

COMPOSITION :

Main fabric : Combed Cotton single jersey - 180 100%cotton

Main fabric : Combed Cotton / Viscose single jersey 90/10 - 180 90%cotton / 10%viscose

WEIGHT :

Main fabric : 180 gsm

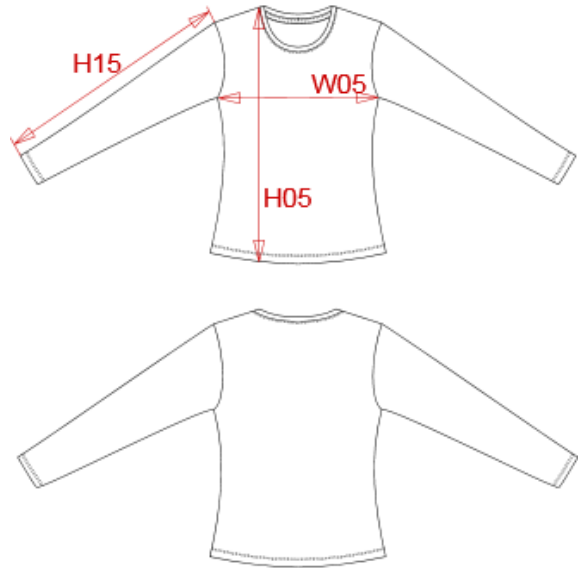
Main fabric : 180 gsm

FABRIC CONSTRUCTION AND FINISHING :

Enzyme washed fabric

ARTICLE WEIGHT :

160 gr/pc



| DESCRIPTION | |
|---------------------|---|
| Français : | T-shirt femme manches longues encolure ronde |
| English : | Ladies long sleeve round neck T-shirt |
| Nederlands : | Dames T-shirt met ronde hals en lange mouwen |
| Deutsch : | Damen langarm rundhals T-shirt |
| Español : | Camiseta de manga larga y escote redondo para mujer |
| Italiano : | T-shirt donna maniche lunghe scollo tondo |
| Português : | T-shirt de senhora de manga comprida e decote redondo |

| MEASUREMENT | | | | | | | |
|---|-------|----|-------|-------|-------|-----|--|
| Description | S | M | L | XL | 2XL | 3XL | |
| H05 Hauteur totale / Total height | 59,50 | 61 | 63,25 | 65,50 | 67,75 | 70 | |
| W05 1/2 largeur poitrine / 1/2 chest width | 43 | 45 | 48 | 51 | 54 | 57 | |
| H15 Longueur manche / Sleeve length | 60 | 61 | 62,50 | 64 | 65,50 | 67 | |

| CARE LABEL | | | | | |
|------------|--|--|--|--|--|
| | | | | | |

| PACKING | |
|---------|---|
| Box | 50 pcs / box S => L:48cm W:32cm H:25cm GW:8.60kg NW:7.20kg M => L:48cm W:32cm H:25cm GW:9.20kg NW:7.80kg L => L:54cm W:34cm H:25cm GW:9.70kg NW:8.20kg XL => L:54cm W:34cm H:25cm GW:10.50kg NW:9.00kg XXL => L:58cm W:36cm H:25cm GW:11.20kg NW:9.60kg 3XL => L:58cm W:36cm H:25cm GW:12.00kg NW:10.40kg |

| COLORS | PANTONE SERIGRAPHIE |
|------------------|---------------------|
| White | White |
| Black | Black |
| Navy | 296C |
| Dark grey | 432C |
| Red | 200C |
| Orange | 1585C |
| Sky blue | 278C |
| Dark khaki | 418C |
| Yellow | 1225C |
| Light royal blue | 7685C |
| Chocolate | 439C |
| Tropical blue | 2185C |
| Oxford grey | - |
| Kelly green | 7727C |
| Fuchsia | 219C |
| Purple | 7447C |
| Wine | 7645C |
| Lime | 367C |
| Forest green | 5605C |
| Light sand | 482C |