

# KARIBAN

**REFERENCE :** K414

**SIZES :** S\_M\_L\_XL\_XXL\_3XL\_4XL

**COMPOSITION :**

Main fabric : Softshell Polyester / Elastane woven 94/6 - 340  
 94%polyester / 6%elastane  
 Mesh : Polyester mesh - 100 For front middle lining  
 Low elasticity mesh 100%polyester

**WEIGHT :**

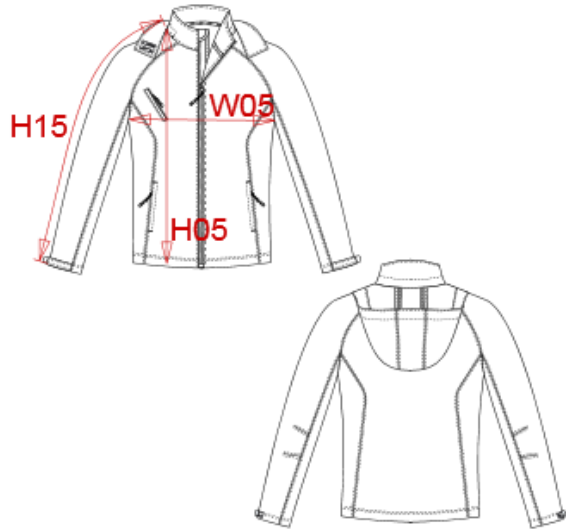
Main fabric : 340 gsm  
 Mesh : 100 gsm

**FABRIC CONSTRUCTION AND FINISHING :**

3 layers bonded (Outer: Woven softshell/Performance membrane/Inner: Anti pilling micropolar fleece) BR:  
 1000g/m2/24h / WP5000

**ARTICLE WEIGHT :**

625 gr/pc



DESCRIPTION	
<b>Français :</b>	Veste softshell à capuche femme
<b>English :</b>	Ladies' hooded softshell jacket
<b>Nederlands :</b>	
<b>Deutsch :</b>	DAMEN SOFTSHELL JACKE MIT KAPUZE
<b>Español :</b>	Chaqueta softshell con capucha para mujer
<b>Italiano :</b>	GIACCA SOFTSHELL CON CAPPuccio DA DONNA
<b>Português :</b>	Blusão Softshell de senhora com capuz

COLORS	PANTONE SERIGRAPHIE
Black	Black
Navy	296C
Red	200C
Titanium	7540C

MEASUREMENT							
Description	S	M	L	XL	XXL	3XL	4XL
<b>W05</b> 1/2 largeur poitrine avec zip / 1/2 chest width with zipper	48	50	52	54	56	58	61
<b>H05</b> Hauteur totale devant / Front total height	63,70	65,20	66,70	68,20	69,70	71,20	73,40
<b>H15</b> Longueur dessus de manche / Sleeve length	72,50	74	75,50	77	78,50	80	82

CARE LABEL				

PACKING	
Box	10 pcs / box S-M => L:50cm W:33cm H:23cm GW:7.80kg NW:7kg L-XL => L:54cm W:35cm H:23cm GW:8.50kg NW:7.50kg XXL-4XL => L:58cm W:37cm H:23cm GW:9.10kg NW:8.10kg