

# KARIBAN

**REFERENCE :** K467

**SIZES :** XS\_S\_M\_L\_XL\_XXL

**COMPOSITION :**

Main fabric : Brushed Combed Cotton / Polyester fleece 80/20 - 280 80%cotton / 20%polyester

Fabric 1 : Cotton single jersey - 180 For hood lining, neckline property tape. 100%cotton

**WEIGHT :**

Main fabric : 280 gsm

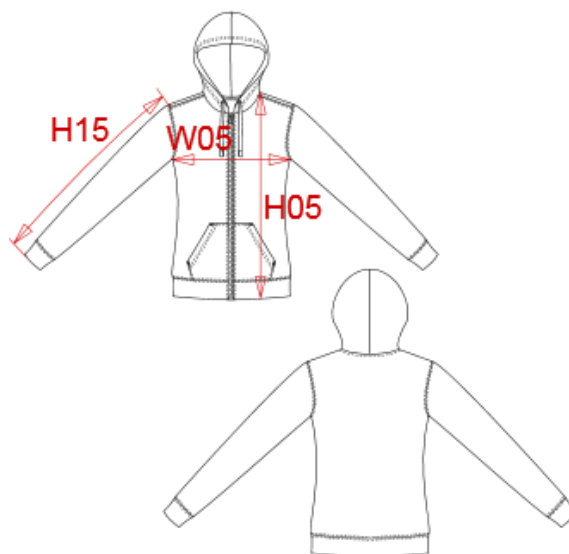
Fabric 1 : 180 gsm

**FABRIC CONSTRUCTION AND FINISHING :**

Regular

**ARTICLE WEIGHT :**

480 gr/pc



DESCRIPTION
<b>Français :</b> Sweat-shirt zippé capuche contrastée femme
<b>English :</b> Ladies' contrast hooded full zip sweatshirt
<b>Nederlands :</b> Dameswearer met rits en capuchon in contrasterende kleur
<b>Deutsch :</b> Damen-Sweatshirt mit Reißverschluss und Kapuze in Kontrastfarbe
<b>Español :</b> Sudadera con capucha y cremallera contrastada para mujer
<b>Italiano :</b> Felpa donna con cappuccio a contrasto full zip
<b>Português :</b> Sweatshirt de senhora com fecho e capuz em contraste

COLORS	PANTONE SERIGRAPHIE
Black / Fine grey	Black / Cool gray 7C
Navy / Fine grey	296C / Cool gray 7C
Black / Red	Black / 200C
Black / Yellow	Black / 1225C
Red / White	200C / White
Oxford grey / Navy	- / 296C

MEASUREMENT						
Description	XS	S	M	L	XL	XXL
<b>H05</b> Hauteur totale avec BC / Total height with rib	61,50	63	64,50	66	67,50	69,75
<b>W05</b> 1/2 largeur poitrine / 1/2 chest width	45	47	49	51	53	56
<b>H15</b> Longueur manche avec BC / Sleeve length with rib	61	62	63	64	65	66,25

CARE LABEL				

PACKING	
Box	20 pcs / box XS-S => L:58.1cm W:37.8cm H:32cm GW:9.55kg NW:8.45kg M-XXL => L:58.1cm W:37.8cm H:42cm GW:11.5kg NW:10.25kg