

# KARIBAN

**REFERENCE :** K504

**SIZES :** S\_M\_L\_XL\_XXL

**COMPOSITION :**

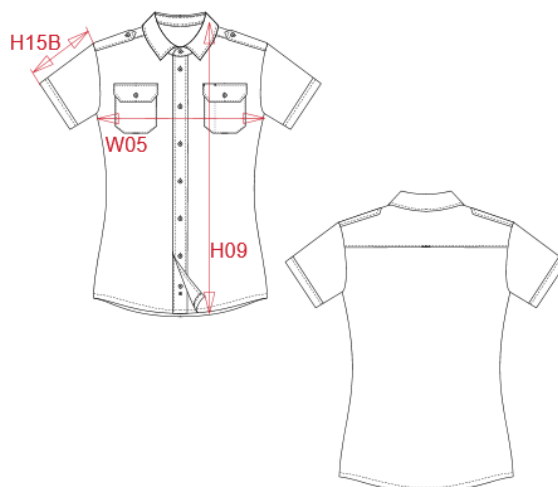
Main fabric : Polyester / Cotton poplin 65/35 - 115 65% polyester / 35%cotton

**WEIGHT :**

Main fabric : 115 gsm

**ARTICLE WEIGHT :**

136 gr/pc



## DESCRIPTION

**Français :** Chemise pilote manches courtes femme

**English :** Ladies' short sleeve pilot shirt

**Nederlands :** Damespilootoverhemd korte mouwen

**Deutsch :** Kurzarm-Pilotenhemd für Damen

**Español :** Camisa piloto de manga corta de mujer

**Italiano :** Camicia pilota donna maniche corte

**Português :** Camisa piloto de senhora de manga curta

## COLORS

White

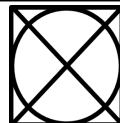
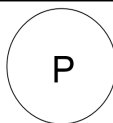
## PANTONE SERIGRAPHIE

White

## MEASUREMENT

Description	S	M	L	XL	XXL		
<b>H09 (L)</b> Hauteur totale devant / Front total height	64,50	66,50	68,50	70,50	72,50		
<b>W05 (L)</b> 1/2 largeur poitrine / 1/2 chest width	47,50	50,50	53,50	56,50	59,50		
<b>H15C (L)</b> Longueur manche courte / Short sleeve length	17	17,75	18,50	19,25	20		

## CARE LABEL



## PACKING

Box	12 pcs / box S => L:54cm W:38cm H:20cm GW:3.48kg NW:2.38kg M => L:54cm W:38cm H:20cm GW:3.58kg NW:2.48kg L => L:54cm W:38cm H:20cm GW:3.71kg NW:2.61kg XL => L:54cm W:38cm H:20cm GW:3.82kg NW:2.72kg XXL => L:54cm W:38cm H:20cm GW:3.94kg NW:2.84kg
-----	--