

KARIBAN

REFERENCE : K536

SIZES : XS_S_M_L_XL_XXL_3XL_4XL

COMPOSITION :

Main fabric : Cotton / Polyester oxford 70/30 - 130 For white color 70%cotton / 30%polyester

Main fabric : Cotton / Polyester oxford 70/30 - 135 For colors 70%cotton / 30%polyester

WEIGHT :

Main fabric : 130 gsm

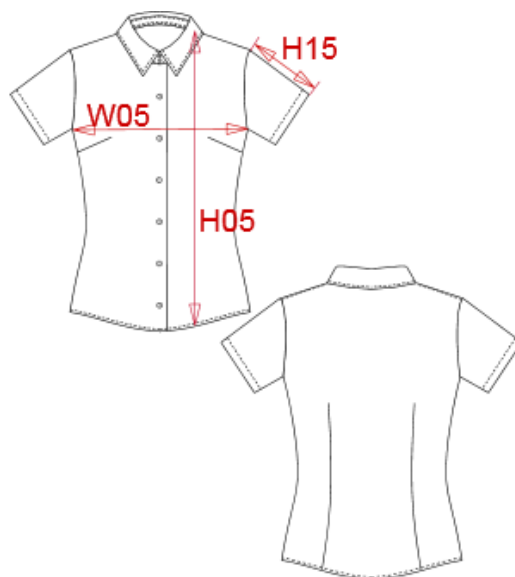
Main fabric : 135 gsm

FABRIC CONSTRUCTION AND FINISHING :

Wrinkle free finish

ARTICLE WEIGHT :

200 gr/pc



DESCRIPTION	
Français :	Chemise femme manches courtes
English :	Ladies short sleeve easy care oxford shirt
Nederlands :	Dames blouse met korte mouwen
Deutsch :	Pflegeleichte damen kurzarm oxford-bluse
Español :	Camisa de manga corta para mujer
Italiano :	Camicia oxford donna a maniche corte
Português :	Camisa de senhora manga curta em oxford tratamento fácil

COLORS	PANTONE SERIGRAPHIE
White	White
Oxford silver	-
Oxford blue	-

MEASUREMENT									
Description	XS	S	M	L	XL	2XL	3XL	4XL	
W05 1/2 largeur poitrine / 1/2 chest width	46	48	50	53	56	59	62	65	
H15 Longueur manche / Sleeve length	18,50	19,50	20,50	21,60	22,75	23,85	25	26,10	
H05 Hauteur totale dos / Back total height	62,75	64,30	65,85	67,75	69,70	71,65	73,55	75,50	

CARE LABEL				

PACKING	
Box	12 pcs / box XS => L:52cm W:34cm H:20cm GW:3.60kg NW:2.30kg S => L:52cm W:34cm H:20cm GW:3.70kg NW:2.40kg M => L:52cm W:34cm H:20cm GW:3.80kg NW:2.50kg L => L:52cm W:34cm H:20cm GW:3.90kg NW:2.60kg XL => L:52cm W:34cm H:20cm GW:4.00kg NW:2.70kg XXL => L:52cm W:34cm H:20cm GW:4.10kg NW:2.70kg 3XL => L:52cm W:34cm H:20cm GW:4.20kg NW:2.80kg 4XL => L:52cm W:34cm H:20cm GW:4.30kg NW:2.90kg