

# KARIBAN

**REFERENCE :** K543

**SIZES :** XS\_S\_M\_L\_XL\_XXL\_3XL\_4XL\_5XL\_6XL

**COMPOSITION :**

Main fabric : Cotton poplin - 120 For white color 100%cotton

Main fabric : Cotton poplin - 125 For colors 100%cotton

**WEIGHT :**

Main fabric : 120 gsm

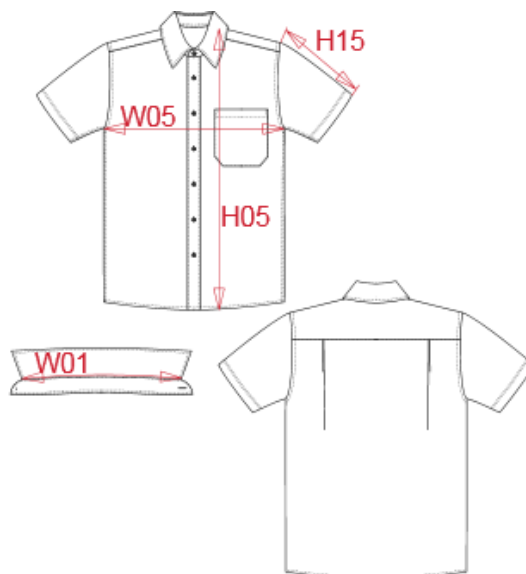
Main fabric : 125 gsm

**FABRIC CONSTRUCTION AND FINISHING :**

Easy care

**ARTICLE WEIGHT :**

250 gr/pc



DESCRIPTION	
<b>Français :</b>	Chemise homme manches courtes
<b>English :</b>	Men's short sleeve easy care cotton poplin shirt
<b>Nederlands :</b>	Heren overhemd met korte mouwen
<b>Deutsch :</b>	Pflegeleichtes baumwolle popeline herren kurzarm hemd
<b>Español :</b>	Camisa de manga corta
<b>Italiano :</b>	Camicia uomo a maniche corte popeline
<b>Português :</b>	Camisa de manga curta em popeline tratamento fácil

COLORS	PANTONE SERIGRAPHIE
White	White
Black	Black
Navy	296C
Classic red	1945C
Zinc	447C
Bright sky	2708C

MEASUREMENT										
Description	XS	S	M	L	XL	2XL	3XL	4XL	5XL	6XL
<b>W01</b> Longueur encolure / Neckline length	40	41,25	42,50	43,75	45	46,25	47,90	49,50	51,20	52,80
<b>W05</b> 1/2 largeur poitrine / 1/2 chest width	51	54	57	60	63	66	69	72	75	78
<b>H15</b> Longueur manche / Sleeve length	23	24	25	26	27	28	29	30	31	32
<b>H05</b> Hauteur totale dos / Back total height	72,50	74,50	76,50	78,50	80,50	82,50	84,50	86,50	88,50	90,50

CARE LABEL				

PACKING	
Box	12 pcs / box S => L:56 W:37 H:20cm GW:5.1kg NW:3.3kg M => L:56 W:37 H:20cm GW:5.2kg NW:3.4kg L => L:56 W:37 H:20cm GW:5.3kg NW:3.5kg XL => L:56 W:37 H:20cm GW:5.4kg NW:3.6kg XXL => L:56 W:37 H:20cm GW:5.5kg NW:3.7kg 3XL => L:56 W:37 H:20cm GW:5.6kg NW:3.8kg 4XL => L:56 W:37 H:20cm GW:5.7kg NW:3.9kg 5XL => L:56 W:37 H:20cm GW:5.8kg NW:4.0kg 6XL => L:56 W:37 H:20cm GW:5.9kg NW:4.1kg