

# KARIBAN

**REFERENCE :** K548

**SIZES :** XS\_S\_M\_L\_XL\_XXL\_3XL\_4XL

**COMPOSITION :**

Main fabric : Polyester / Cotton poplin 65/35 - 105 For white colour 65%polyester / 35%cotton

Main fabric : Polyester / Cotton poplin 65/35 - 110 For colours 65%polyester / 35%cotton

**WEIGHT :**

Main fabric : 105 gsm

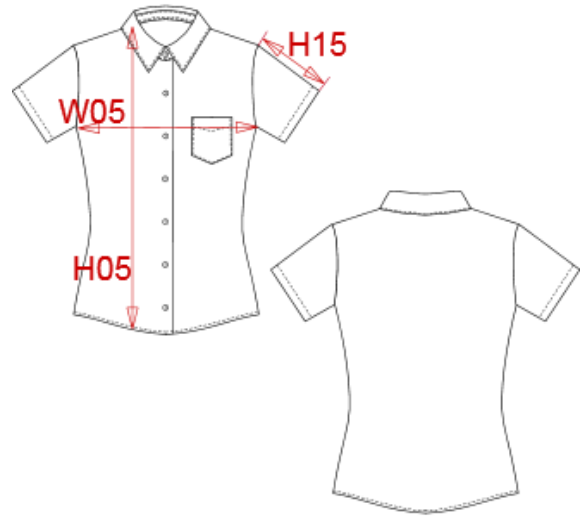
Main fabric : 110 gsm

**FABRIC CONSTRUCTION AND FINISHING :**

Easy Care

**ARTICLE WEIGHT :**

230 gr/pc



DESCRIPTION										
<b>Français :</b> Chemise femme manches courtes										
<b>English :</b> Ladies short sleeve easy care polycotton poplin shirt										
<b>Nederlands :</b> Dames blouse met korte mouwen										
<b>Deutsch :</b> Pflegeleichte polycotton damen kurzarm bluse										
<b>Español :</b> Camisa de manga corta para mujer										
<b>Italiano :</b> Camicia donna maniche corte policotone popeline										
<b>Português :</b> Camisa de senhora de manga curta tratamento fácil										

MEASUREMENT										
Description	XS	S	M	L	XL	XXL	3XL	4XL		
<b>W05</b> 1/2 largeur poitrine/1/2 chest width	46	48	50	53	56	59	62	65		
<b>H15</b> Longueur manche sans poignet / Sleeve length without cuff	18,50	19,50	20,50	21,60	22,75	23,85	25	26,10		
<b>H05</b> Hauteur totale dos / Back total height	62,65	64,20	66,75	67,70	69,60	71,55	73,45	75,40		

CARE LABEL				

PACKING	
Box	12 pcs / box XS => L:52cm W:34cm H:20cm GW:3.20kg NW:1.80kg S => L:52cm W:34cm H:20cm GW:3.30kg NW:1.90kg M => L:52cm W:34cm H:20cm GW:3.40kg NW:2.00kg L => L:52cm W:34cm H:20cm GW:3.50kg NW:2.10kg XL => L:52cm W:34cm H:20cm GW:3.60kg NW:2.20kg XXL => L:52cm W:34cm H:20cm GW:3.70kg NW:2.30kg 3XL => L:52cm W:34cm H:20cm GW:3.80kg NW:2.40kg 4XL => L:52cm W:34cm H:20cm GW:3.90kg NW:2.50kg

COLORS	PANTONE SERIGRAPHIE
White	White
Black	Black
Navy	296C
Classic red	1945C
Bright sky	2708C
Zinc	447C
Brown	440C
Wine	7645C
Burnt lime	583C
Orange	1585C
Silver	2331C
Bright turquoise	638C
Purple	7447C
Forest green	5605C
Light royal blue	7685C
Fuchsia	219C
Kelly green	7727C
Yellow	1225C