

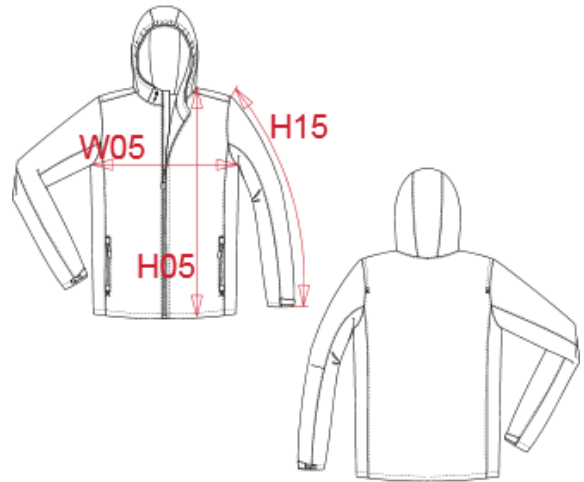
KARIBAN

REFERENCE : K6104

SIZES : XS_S_M_L_XL_XXL_3XL

COMPOSITION :

Main fabric : Polyamide 228T taslon PU milky coating - 150 100%polyamide
 Main fabric : Polyamide 228T taslon PU milky coating - 150 For contrasted hood piping and contrasted inner tab (outer part only) 100%polyamide
 Mesh : Mesh 75 For hood lining and yokes on lining 100% polyester
 Lining 2 : Polyester 210T - 60 For lining 100%polyester



WEIGHT :

Main fabric : 150 gsm
 Main fabric : 150 gsm
 Mesh : 75 gsm
 Lining 2 : 60 gsm

FABRIC CONSTRUCTION AND FINISHING :

Full taped seams BR: 5000gsm/24h / WP: 3000mm

ARTICLE WEIGHT :

520 gr/pc

| DESCRIPTION | |
|---------------------|---------------------------|
| Français : | Veste imperméable unisexe |
| English : | Waterproof jacket |
| Nederlands : | Waterdichte jas |
| Deutsch : | WASSERDICHTER JACKE |
| Español : | Chaqueta impermeable |
| Italiano : | GIACCA IMPERMEABILE |
| Português : | Blusão waterproof |

| COLORS | PANTONE SERIGRAPHIE |
|--------|---------------------|
| Navy | 296C |

| MEASUREMENT | | | | | | | |
|---|-------|-------|-------|-------|-------|-------|-------|
| Description | XS | S | M | L | XL | XXL | 3XL |
| H05 Hauteur totale / Total height | 73,50 | 75,50 | 77,50 | 79,50 | 81,50 | 83,50 | 86,25 |
| W05 1/2 largeur poitrine / 1/2 chest width | 54 | 57 | 60 | 63 | 66 | 69 | 73 |
| H15 Longueur manche / Sleeve length | 64 | 66 | 68 | 70 | 72 | 74 | 76,25 |

| CARE LABEL | | | | |
|------------|--|--|--|--|
| | | | | |

| PACKING | |
|---------|---|
| Box | 10 pcs / box XS-M => L:60cm W:35cm H:15cm GW:6.40kg NW:5.30kg L-XL => L:65cm W:40cm H:15cm GW:7.30kg NW:6.00kg XXL-3XL => L:70cm W:45cm H:15cm GW:8.10kg NW:6.70kg |