

KARIBAN

REFERENCE : K6123

SIZES : XS_S_M_L_XL_XXL

COMPOSITION :

Main fabric : Polyester 290T - 110 100%polyester

Padding : Polyester polyfil - 130 For quilted body lining and front bottom yoke 100%polyester

Padding : Polyfil - 70 For quilted sleeve lining 100%polyester

Lining 2 : Polyester taffeta 210T - 60 Inside quilted lining 100% polyester

WEIGHT :

Main fabric : 110 gsm

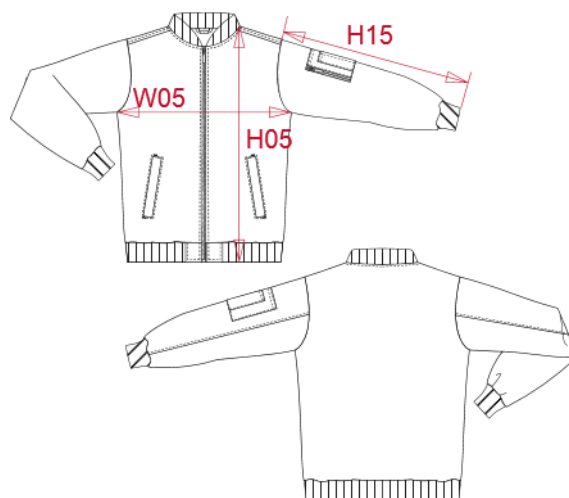
Padding : 130 gsm

Padding : 70 gsm

Lining 2 : 60 gsm

ARTICLE WEIGHT :

530 gr/pc



DESCRIPTION
Français : Blouson bomber femme
English : Ladies' bomber jacket
Nederlands : Dames bomberjack
Deutsch : Bomberjacke für Damen
Español : Cazadora bomber de mujer
Italiano : Giacca Bomber donna
Português : Blusão bomber de senhora

COLORS	PANTONE SERIGRAPHIE
Black	Black
Navy	296C
Deep khaki	Black 7C

MEASUREMENT						
Description	XS	S	M	L	XL	XXL
H05 (L) Hauteur totale / Total height	58,30	60,30	62,30	64,30	66,30	68,30
W05 (L) 1/2 largeur poitrine / 1/2 chest width	47	50	53	56	59	62
H15B (L) Longueur manche avec poignet / Sleeve length with cuff	62,50	63,50	64,50	65,50	66,50	67,50

CARE LABEL

PACKING	
Box	10 pcs / box XS => L:63cm W:38cm H:36cm GW:7.1kg NW:5.4kg S => L:63cm W:38cm H:36cm GW:8.8kg NW:7.1kg M => L:63cm W:38cm H:36cm GW:9.1kg NW:7.4kg L => L:63cm W:38cm H:36cm GW:9.3kg NW:7.6kg XL => L:63cm W:38cm H:36cm GW:9.8kg NW:8.1kg XXL => L:63cm W:38cm H:36cm GW:10.4kg NW:8.7kg