

KARIBAN

REFERENCE : K6127

SIZES : XS_S_M_L_XL_XXL

COMPOSITION :

Main fabric : Polyester pongee 240T - 80 100%polyester

Padding : Polyester polyfil - 150 For padding 100%polyester

Fabric 1 : Cotton corduroy - 285 For inner collar, front shoulder yoke, under flap pocket and bottom binding finishing 100% cotton

Lining 2 : Polyester taffeta 210T - 60 For lining, pocket sack and inner seam binding 100%polyester

WEIGHT :

Main fabric : 80 gsm

Padding : 150 gsm

Fabric 1 : 285 gsm

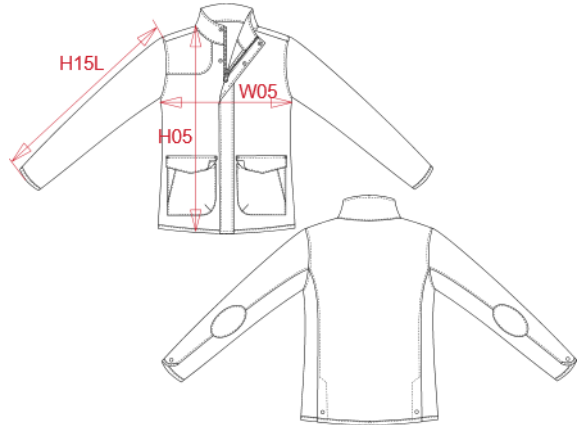
Lining 2 : 60 gsm

TECHNICAL DETAIL :

WR: 600mm

ARTICLE WEIGHT :

579 gr/pc



DESCRIPTION
Français : Veste matelassée femme
English : Ladies' quilted jacket
Nederlands : Gewatteerde damesjas
Deutsch : Damen-Steppjacke
Español : Chaqueta acolchada rombos de mujer
Italiano : Giacca imbottita donna
Português : Casaco acolchoado de senhora

COLORS	PANTONE SERIGRAPHIE
Black / Black	Black / Black
Navy / Black	296C / Black
Mossy green / Black	7771C / Black

MEASUREMENT						
Description	XS	S	M	L	XL	XXL
H05 (L) Hauteur totale / Total height	62	64	66	68	70	72
W05 (L) 1/2 largeur poitrine / 1/2 chest width	45	48	51	54	57	60
H15L (L) Longueur manche longue / Long sleeve length	60	61	62	63	64	65

CARE LABEL				

PACKING	
Box	10 pcs / box XS => L:60cm W:40cm H:36cm GW:6.6kg NW:5.1kg S => L:60cm W:40cm H:36cm GW:6.9kg NW:5.4kg M => L:60cm W:40cm H:36cm GW:7.3kg NW:5.8kg L => L:60cm W:40cm H:36cm GW:7.6kg NW:6.1kg XL => L:60cm W:40cm H:36cm GW:7.9kg NW:6.4kg XXL => L:60cm W:40cm H:36cm GW:8.2kg NW:6.7kg