

# KARIBAN

**REFERENCE :** K696

**SIZES :** 4/6\_8/10\_10/12\_12/14

**COMPOSITION :**

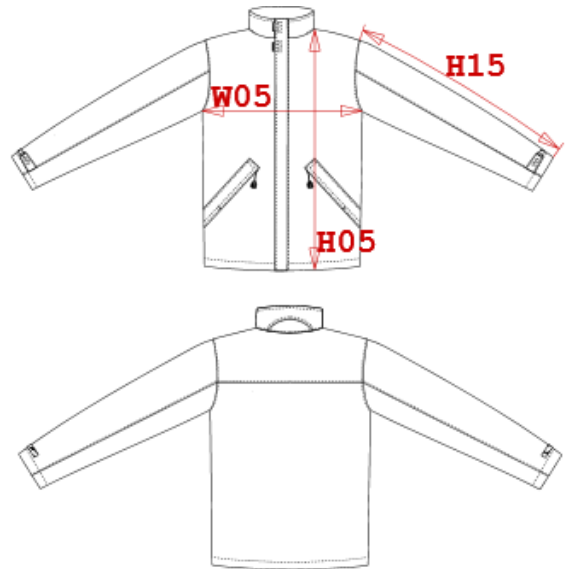
Main fabric : Polyester oxford PVC coating - 250 100% polyester  
 Lining 2 : Lining 210T For padded lining 100%polyester  
 Lining : Polar fleece 300 For inner collar 100%polyester  
 Wad 1 : Polyfil 165 For padded inner body 100%polyester  
 Wad 2 : Polyfil 120 For padded inner sleeves 100%polyester

**WEIGHT :**

Main fabric : 250 gsm  
 Lining 2 : 60 gsm  
 Lining : 300 gsm  
 Wad 1 : 165 gsm  
 Wad 2 : 120 gsm

**ARTICLE WEIGHT :**

586 gr/pc



DESCRIPTION	
<b>Français :</b>	Parka avec doublure matelassée
<b>English :</b>	Padded parka jacket
<b>Nederlands :</b>	Gepolsterte parkajacke mit wasserdichte nahter
<b>Deutsch :</b>	Parka mit gestepptem futter
<b>Español :</b>	Parka de forro acolchado
<b>Italiano :</b>	Parka per uomo
<b>Português :</b>	Parka de criança

COLORS	PANTONE SERIGRAPHIE
Navy	296C
Black	Black
Red	200C

MEASUREMENT						
Description	4/6	8/10	10/12	12/14		
<b>H05</b> Hauteur totale / Total height	61,60	70,80	73,15	77,50		
<b>W05</b> 1/2 largeur poitrine / 1/2 chest width	44,80	48	51	54		
<b>H15</b> Longueur manche / Sleeve length	43	51	55	57,50		

CARE LABEL				

PACKING	
Box	10 pcs / box 4/6 => L:45cm W:30cm H:34cm GW:8kg NW:7kg 8/10=> L:48cm W:35cm H:34cm GW:9kg NW:8kg 10/12 => L:50cm W:37cm H:34cm GW:10kg NW:9kg 12/14 => L:55cm W:39cm H:cm34 GW:11.6kg NW:10.3kg