

# KARIBAN

**REFERENCE :** K706

**SIZES :** XS\_S\_M\_L\_XL\_XXL\_3XL\_4XL

**COMPOSITION :**

Main fabric : French Terry Combed Cotton / Polyester fleece

80/20 - 280 80%cotton / 20%polyester

Fabric 1 : Cotton single jersey - 180 For inner contrasted waistband and pockets sacks. 100%cotton

**WEIGHT :**

Main fabric : 280 gsm

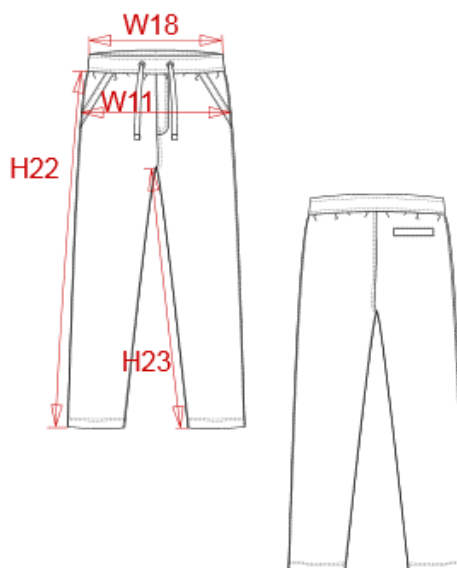
Fabric 1 : 180 gsm

**FABRIC CONSTRUCTION AND FINISHING :**

Low shrinkage

**ARTICLE WEIGHT :**

560 gr/pc



DESCRIPTION	
<b>Français :</b>	Pantalon french terry
<b>English :</b>	French terry pants
<b>Nederlands :</b>	Joggingbroek french terry
<b>Deutsch :</b>	French Terry-Hose
<b>Español :</b>	Pantalón de felpa
<b>Italiano :</b>	Pantaloni in tessuto French Terry
<b>Português :</b>	Calças em french terry

COLORS	PANTONE SERIGRAPHIE
Navy	296C
Oxford grey	-
Black	Black
Light royal blue	7685C

MEASUREMENT										
Description	XS	S	M	L	XL	XXL	3XL	4XL		
<b>W18</b> 1/2 taille avec élastique / 1/2 waist with elastic	32	35	38	41	44	47	50	54		
<b>W11</b> 1/2 bassin / 1/2 hip width	45,50	48,50	51,50	54,50	57,50	60,50	63,50	67,50		
<b>H22</b> Longueur côté / Side length	97	99	101	103	105	107	109	111,25		
<b>H23</b> Longueur entrejambe / Inside leg length	78	79,25	80,50	81,75	83,15	84,50	85,75	87		

CARE LABEL				

PACKING	
Box	20 pcs / box All sizes => L:58.1cm W:37.8cm H:42cm GW:8.2kg NW:6.9kg