

# KARIBAN

**REFERENCE :** K961

**SIZES :** S\_M\_L\_XL\_XXL\_3XL\_4XL

**COMPOSITION :**

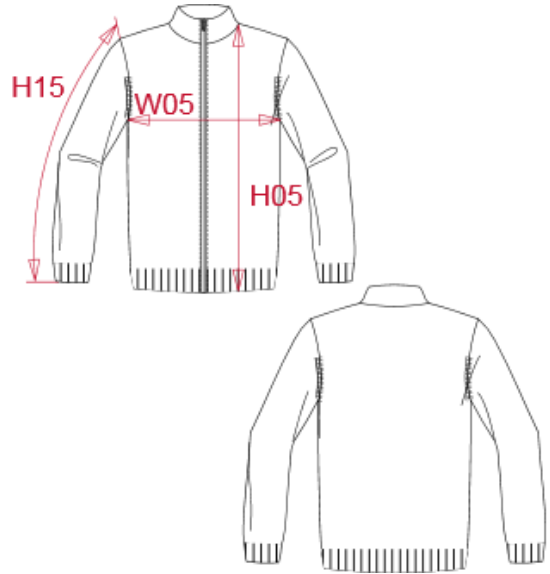
Main fabric : Cotton / Acrylic jersey 50/50 - 290 50%cotton / 50%acrylic

**WEIGHT :**

Main fabric : ± 290 gsm

**ARTICLE WEIGHT :**

500 gr/pc



DESCRIPTION	
<b>Français :</b>	Cardigan homme zippé
<b>English :</b>	Men's zip cardigan
<b>Nederlands :</b>	Heren vestje met rits
<b>Deutsch :</b>	Herren strickjacke
<b>Español :</b>	Chaqueta con cremallera
<b>Italiano :</b>	Cardigan uomo full zip
<b>Português :</b>	Casaco de malha

COLORS	PANTONE SERIGRAPHIE
Black	Black
Grey melange	-
Navy	296C

MEASUREMENT							
Description	S	M	L	XL	2XL	3XL	4XL
<b>H05</b> Hauteur totale / Total height	67,50	69,50	71,50	73,50	75,50	77,50	79,50
<b>W05</b> 1/2 largeur poitrine / 1/2 chest width	49	52	55	58	61	64	67
<b>H15</b> Longueur manche / Sleeve length	64,50	66,50	68,50	70,50	72,50	74,50	76,50

CARE LABEL				

PACKING	
Box	10 pcs / box S-L => L:59cm W:39cm H:15cm GW:5.70kg NW:4.50kg XL-XXL => L:66cm W:39cm H:15cm GW:6.70kg NW:5.40kg 3XL-4XL => L:72cm W:39cm H:15cm GW:7.40kg NW:5.60kg