

# KARIBAN

**REFERENCE :** K962

**SIZES :** XS\_S\_M\_L\_XL\_XXL\_3XL

**COMPOSITION :**

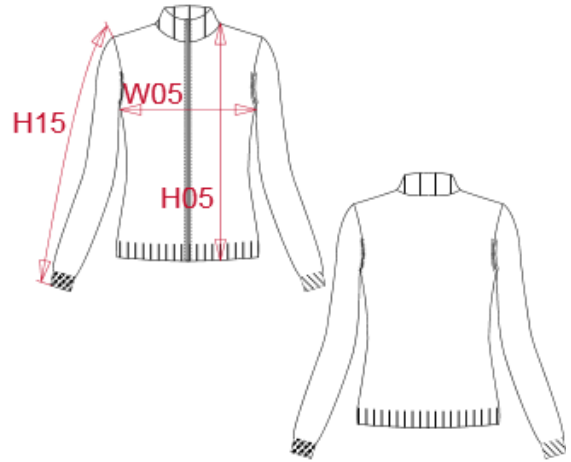
Main fabric : Cotton / Acrylic jersey 50/50 - 290 50%cotton / 50%acrylic

**WEIGHT :**

Main fabric : ± 290 gsm

**ARTICLE WEIGHT :**

420 gr/pc



DESCRIPTION	
<b>Français :</b>	Cardigan femme zippé
<b>English :</b>	Ladies' zip cardigan
<b>Nederlands :</b>	Dames vestje met rits
<b>Deutsch :</b>	Damen strickjacke
<b>Español :</b>	Chaqueta con cremallera para mujer
<b>Italiano :</b>	Cardigan donna full zip
<b>Português :</b>	Casaco de malha de senhora

COLORS	PANTONE SERIGRAPHIE
Black	Black
Grey melange	-
Navy	296C

MEASUREMENT							
Description	XS	S	M	L	XL	2XL	3XL
<b>H05</b> Hauteur totale / Total height	60	61,50	63	64,50	66	67,50	69,50
<b>W05</b> 1/2 largeur poitrine / 1/2 chest width	44	46	48	50	52	54	57
<b>H15</b> Longueur manche / Sleeve length	59	60	61	62	63	64	65

CARE LABEL				

PACKING	
Box	10 pcs / box XS-M => L:55cm W:35cm H:19cm GW:4.80kg NW:3.40kg L-XL => L:60cm W:37cm H:19cm GW:5.40kg NW:3.90kg XXL-3XL => L:65cm W:39cm H:19cm GW:5.90kg NW:4.40kg