

KARIBAN

REFERENCE : K982

SIZES : XS_S_M_L_XL_XXL_3XL

COMPOSITION :

Main fabric : Jersey Cotton / Polyamide / Elastane knit 87/11/2 - 330 87%cotton / 11%polyamide / 2%elastane

Main fabric : Jersey Cotton / Polyamide / Elastane knit 87/11/2 - 330 For fancy stripe on inside whole neckline 87%cotton / 11% polyamide / 2%elastane

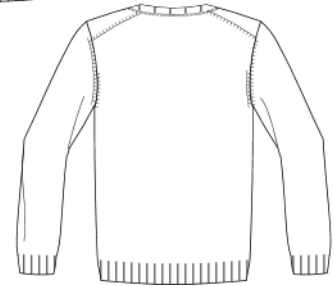
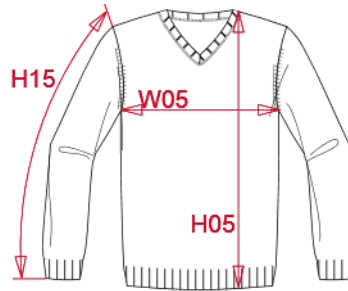
WEIGHT :

Main fabric : 330 gsm

Main fabric : 330 gsm

ARTICLE WEIGHT :

433 gr/pc



DESCRIPTION
Français : Pullover premium col V
English : Premium V-neck jumper
Nederlands : Premium pullover V-hals
Deutsch : Premium-Pullover mit V-Ausschnitt
Español : Jersey Premium con cuello de pico
Italiano : Pullover premium scollo a V
Português : Pullover premium com decote em V

COLORS	PANTONE SERIGRAPHIE
Black heather	-
Navy heather	-
Candy pink heather	-
Camel heather	-
Mykonos blue heather	-
Light grey heather	-

MEASUREMENT							
Description	XS	S	M	L	XL	XXL	3XL
H05 (M) Hauteur totale / Total height	66,50	68,50	70,50	72,50	74,50	76,50	78,50
W05 (M) 1/2 largeur poitrine / 1/2 chest width	46	49	52	55	58	61	64
H15L (M) Longueur manche longue / Long sleeve length	63,50	65	66,50	68	69,50	71	72,50

CARE LABEL

PACKING	
Box	20 pcs / box XS => L:60cm W:40cm H:21cm GW:8.45kg NW:7.15kg S => L:60cm W:40cm H:21cm GW:9.00kg NW:7.70kg M => L:60cm W:40cm H:21cm GW:9.5kg NW:8.2kg L => L:60cm W:40cm H:21cm GW:10.00kg NW:8.6kg XL => L:60cm W:40cm H:23cm GW:10.7kg NW:9.35kg XXL => L:60cm W:40cm H:23cm GW:11.35kg NW:9.95kg 3XL => L:60cm W:40cm H:23cm GW:12.00kg NW:10.60kg